



“my
Reference.”

SAGA² Connect

SAGA²

Gerflor[®]
theflooringgroup



**Interlocking installation
with dovetails**
*Assemblage grâce
aux queues d'aronde*



Adhesive free
Pas d'adhésif



**Fast and easy
renovation**
Rénovation rapide et facile



All over effect
Décor avec effet continu



SAGA² Connect



Installation
with tackyfier
Adhésif repositionnable



Comfort & Resistance
*Envers liège :
confort et résistance*



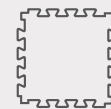
Acoustic
Confort acoustique



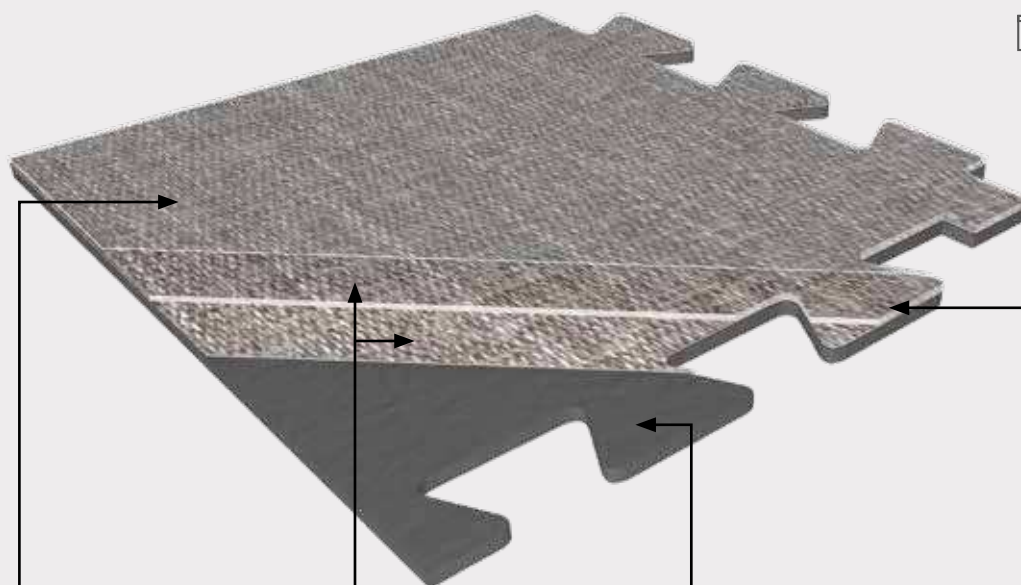
90° installation
Pose à 90°

SAGA²

SAGA² Connect



701.3 x 701.3 mm



PROTECSOL®



Easy maintenance
Facilité d'entretien

4D DESIGN

STRUCTURED EMBOSSED
GRAINAGE STRUCTURÉ



Ultra realistic surface
Décor ultra réaliste

MATT SURFACE
SURFACE MATE



Natural look

CRYSTAL WEAR LAYER
COUCHE D'USURE CRISTAL

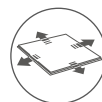


High definition design
& color
Décor haute définition

DESIGNS
DÉCORS

Designs selected to hide
dovetails - all over effect
Décors masquant
les queues d'aronde

RESILIENT REINFORCED CORE



Glass particles
for better stability
Fibres de verre
► stabilité dimensionnelle



Noise absorption
Sonorité à la marche
améliorée



Soft underfoot
Confort à la marche



Renovation ceramic
5 mm joint
Pose sur carrelage
si joint < 5mm

EXCLUSIVE DOVETAILS QUEUES D'ARONDE



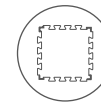
Gerflor patented
Brevet Gerflor



No adhesive
Pas d'adhésif



Easy installation
Pose facile



Avoid mistakes
installation
Limite les erreurs de pose

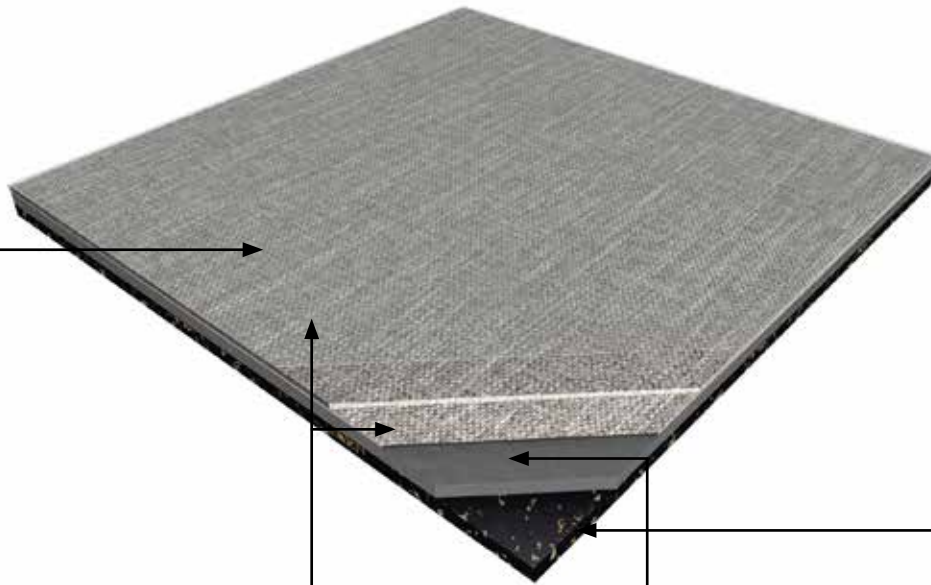
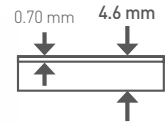


Resistant dovetails
Queues d'aronde
résistantes

SAGA²



500 x 500 mm



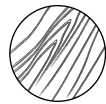
PROTECSOL[®]



Easy maintenance
Facilité d'entretien

4D DESIGN

STRUCTURED EMBOSSED
GRAINAGE STRUCTURÉ



Ultra realistic surface
Décor ultra réaliste

MATT SURFACE
SURFACE MATE



Natural look

CRYSTAL WEAR LAYER
COUCHE D'USURE CRISTAL



High definition design
& color
Décor haute définition

DESIGNS
DÉCORS

Exclusive designs
Décors exclusifs

RESILIENT CORE



Noise absorption
Sonorité à la marche
améliorée



Soft underfoot
Confort à la marche



Renovation ceramic
5 mm joint
Pose sur carrelage
si joint < 5mm

CORK BACKING ENVERS LIÈGE



15 dB
Impact Sound Insulation
Isolation acoustique
bruits de choc

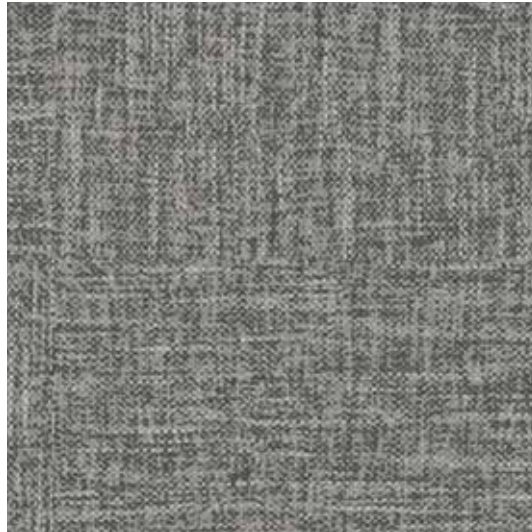


Environmental friendly
Un choix éco-responsable



Easily removable
Conception plombante
repositionnable

SAGA²

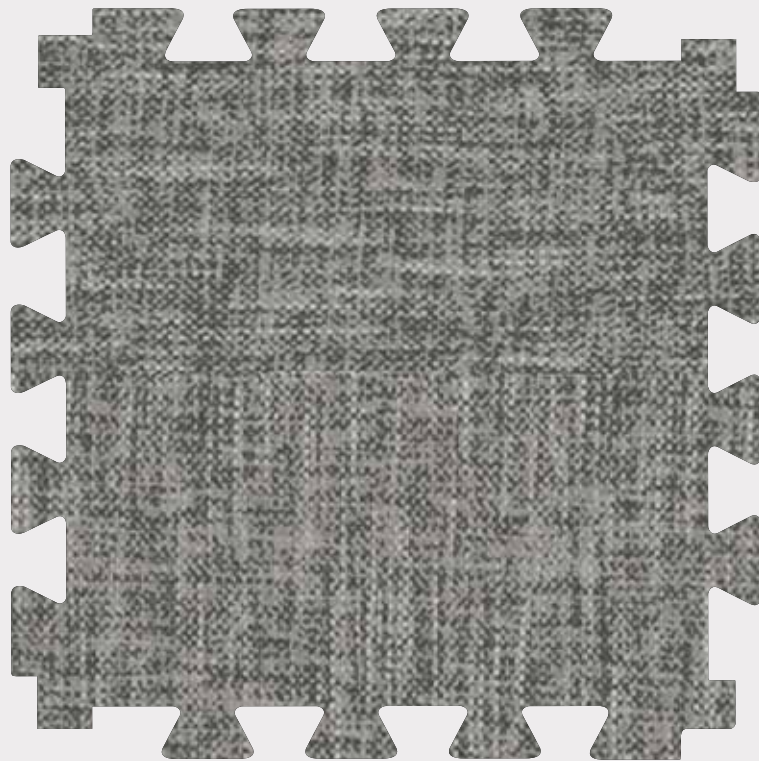


0089 Gentleman Taupe



500x500mm

SAGA² Connect

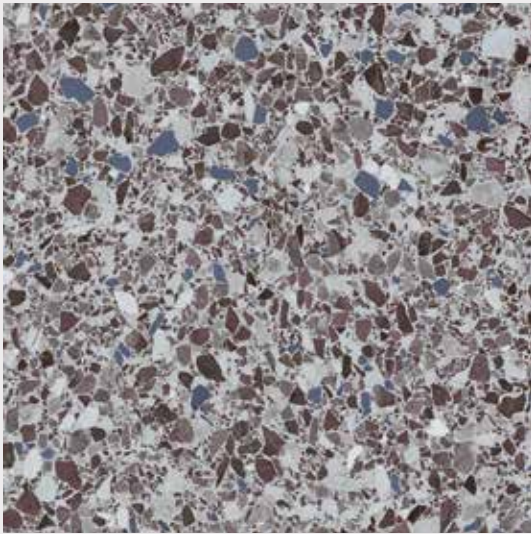


0089 Gentleman Taupe

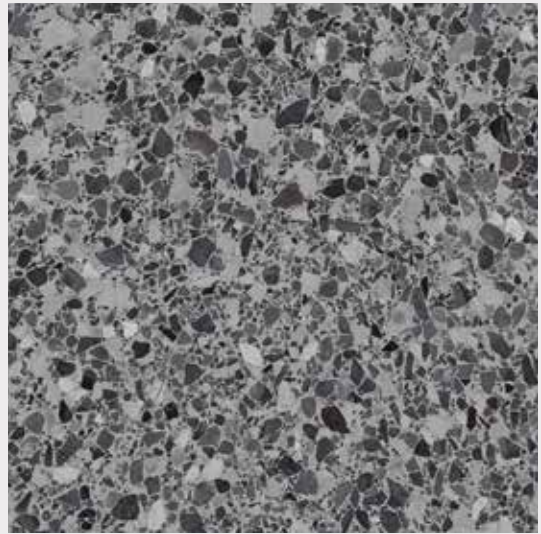


701.3x701.3mm

SAGA² / SAGA² Connect



1089 Dalma Burgundy



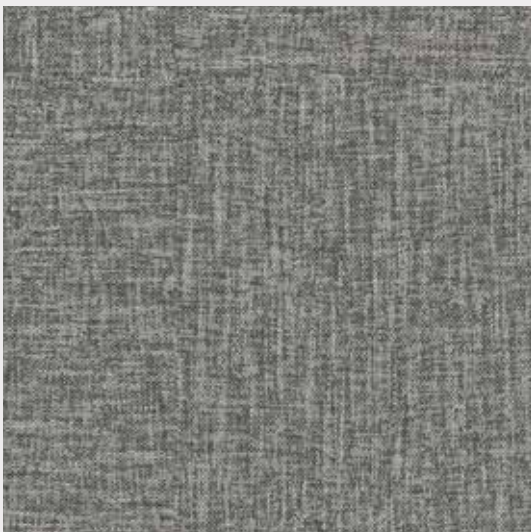
1088 Dalma Grey



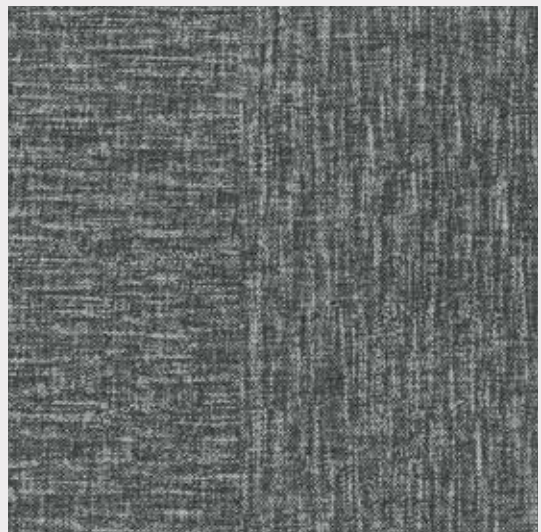
0062 Rough Textile Beige



0063 Rough Textile Grey



0089 Gentleman Taupe



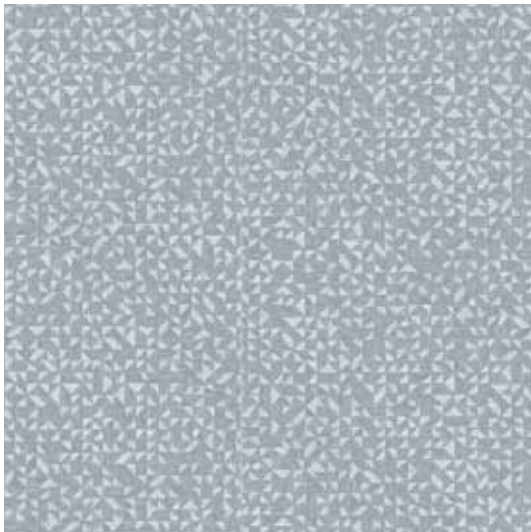
0088 Gentleman Grey



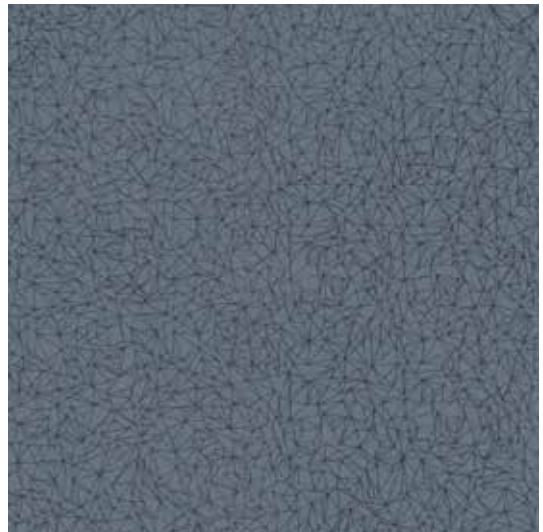
SAGA²



0028 Fiber Silver



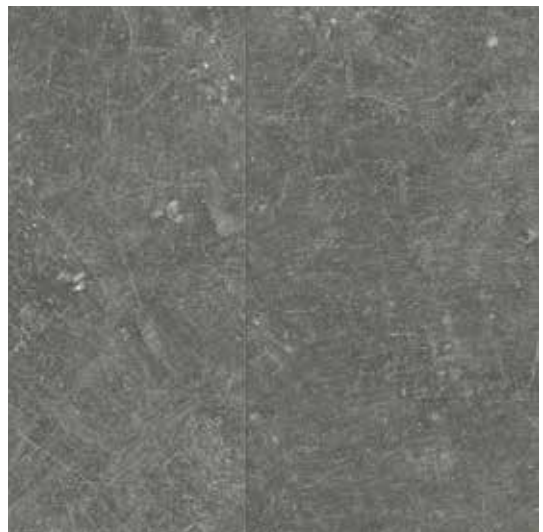
0032 Mozaic Grey



0039 Spider Blue



0021 Barma Sweet



0085 Dock Grey



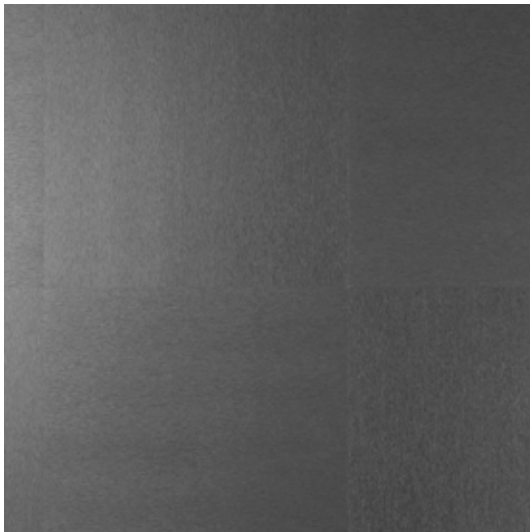
SAGA²



0030 Gentleman Blue



0017 Kadina City



0027 Fiber Heavy Metal



0023 Barma Mystery



SAGA²



0087 Dock Taupe



0029 Gentleman Beige



0572 Amarante Dark



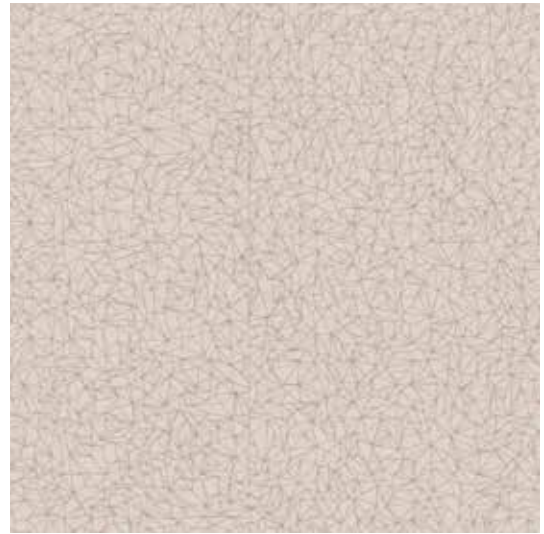
0579 Amarante



SAGA²



0025 Barma Beige



0033 Spider Beige



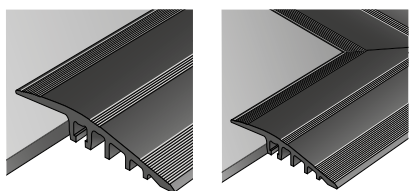
0577 Albion



0026 Fiber Copper

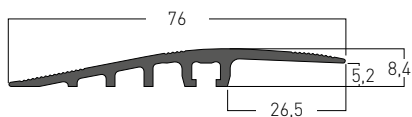


PROFILES PROFILÉS



0505

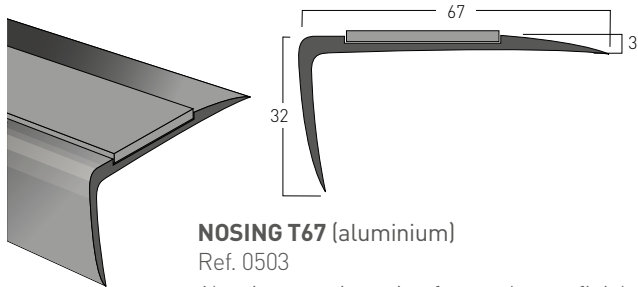
1513



RAMP 5-6MM
(aluminium)
Ref. 0505



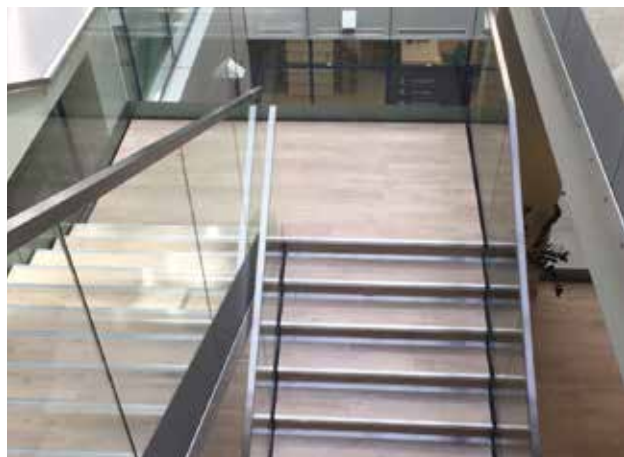
STAIRNOSING SOLUTION NEZ DE MARCHE



NOSING T67 (aluminium)
Ref. 0503

Aluminum stair nosing for an elegant finish to steps while increasing safety with its non-slip strip.

Nez de marche aluminium pour une harmonie palier/marche. Action anti-dérapante pour plus de sécurité.



ENTRANCE MATS TAPIS D'ENTRÉE

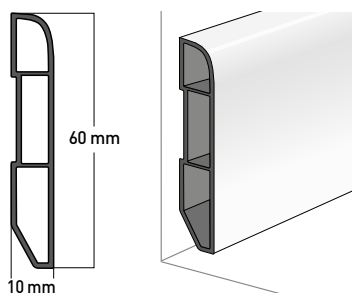


QUICK MAT*
Ref. 8550



LOOSELAY ROMAT GT INSERT KIT
Ref. 1719

SKIRTINGS PLINTHES



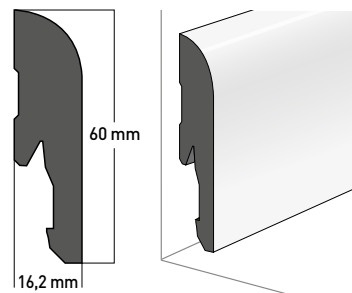
Ref. 6086 S001

VINYL WHITE SKIRTING

- Water resistant
- Can be adhesived
- Can be painted over

PLINTHE PVC BLANCHE

- Résistante à l'eau
- Peut être adhésivée
- Peut être peinte



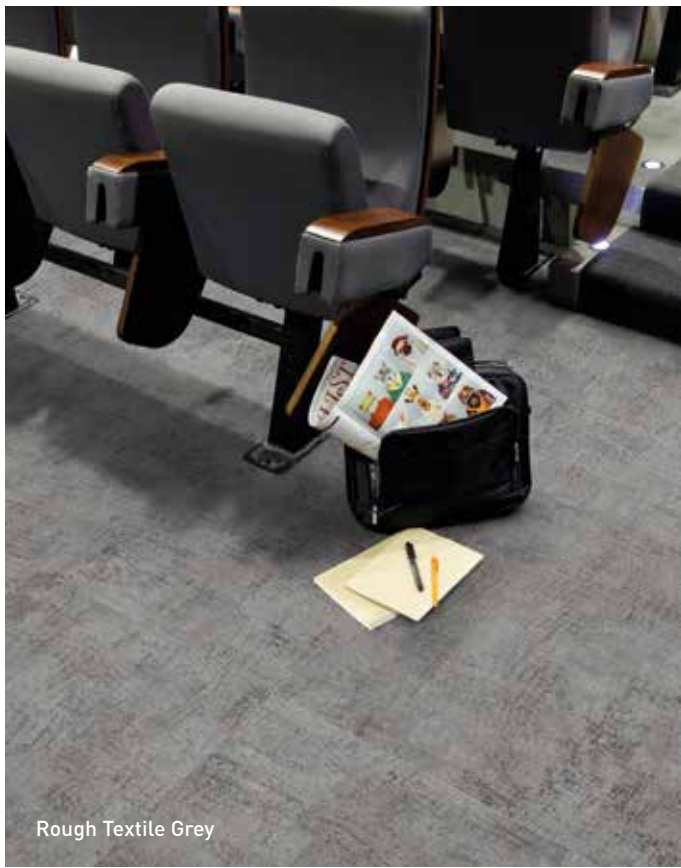
Ref. 5947 S001

MDF WHITE SKIRTING

- Can be clipped (ref. 5948)
- Nailed or adhesived
- Can be painted over

PLINTHE MDF BLANCHE

- Peut être clipsée (réf. 5948)
- Peut être clouée ou adhésivée
- Peut être peinte



Rough Textile Grey



Dalma Burgundy



Rough Textile Beige



Gentleman Grey



Dalma Grey

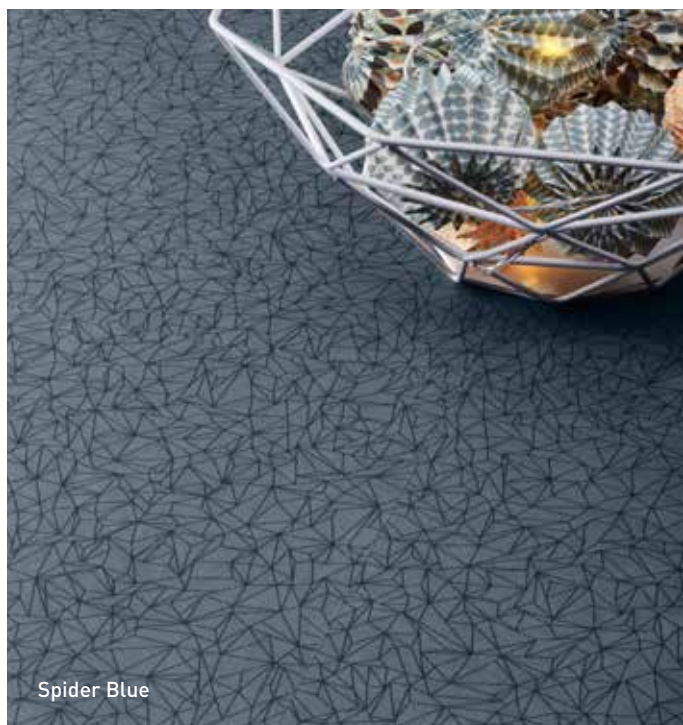


Gentleman Taupe

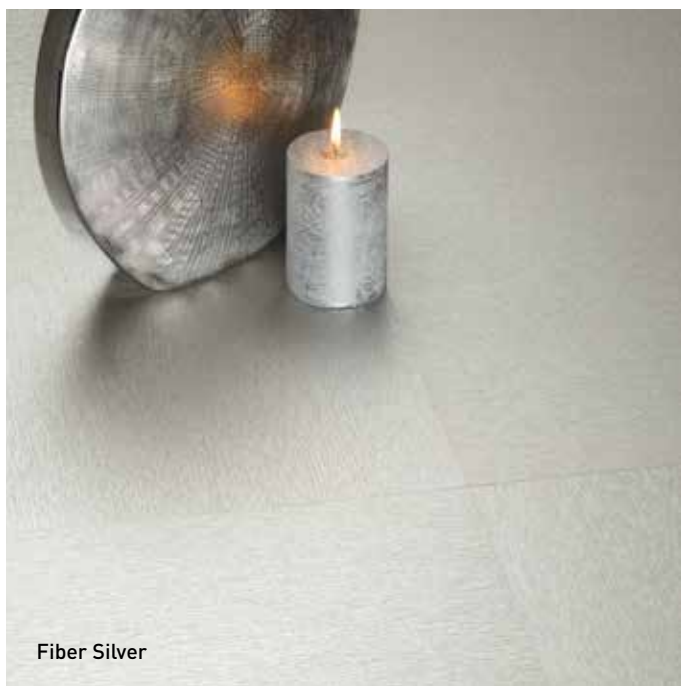




Dock Grey



Spider Blue



Fiber Silver



Barma Sweet

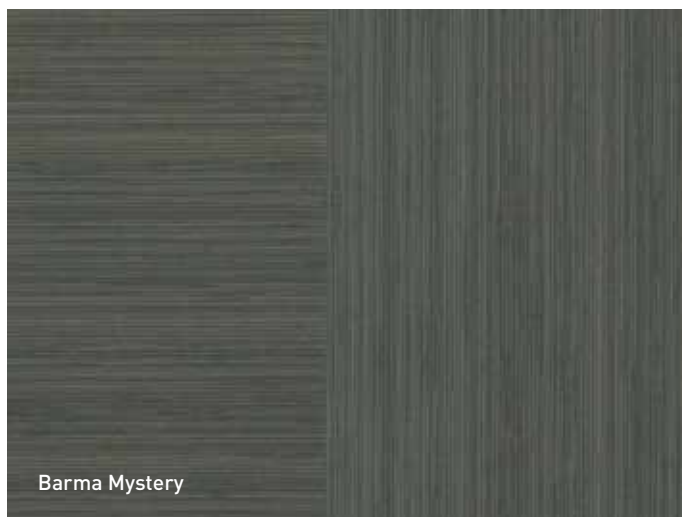


Mozaic Grey





Kadina City



Barma Mystery



Gentleman Blue

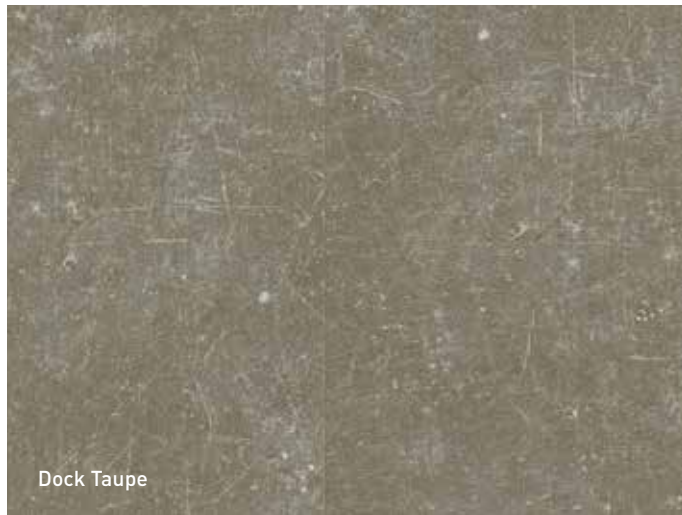


Fiber Heavy Metal





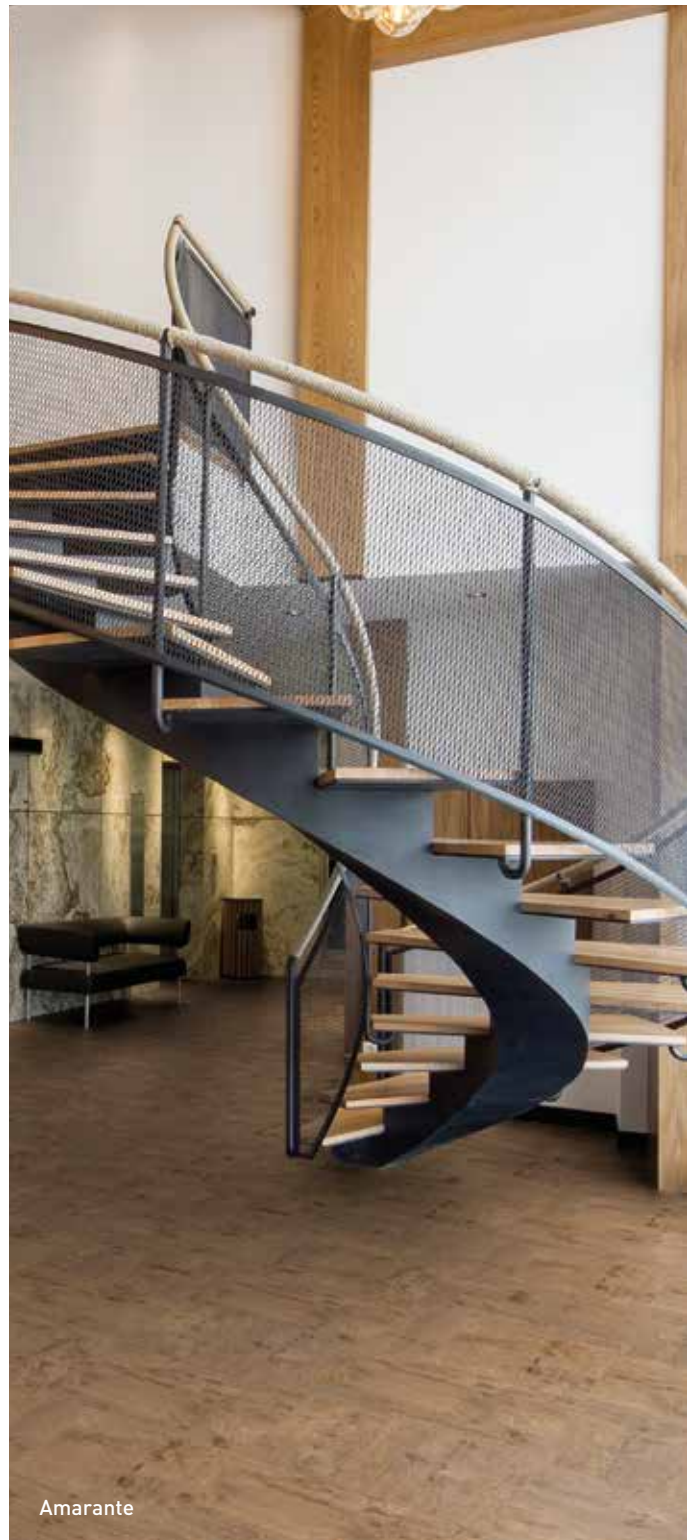
Gentleman Beige



Dock Taupe



Amarante Dark



Amarante

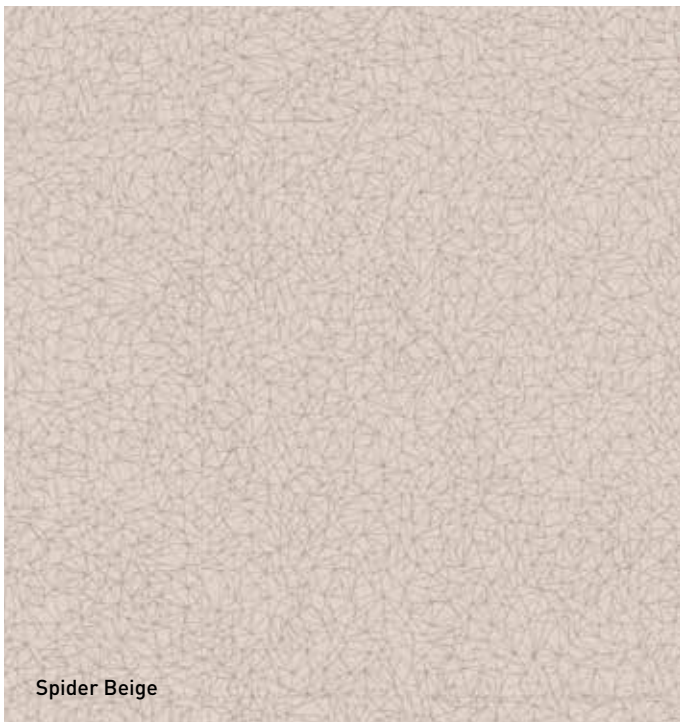




Fiber Copper



Barma Beige



Spider Beige



Albion

SAGA² / SAGA² Connect

gerflor.com

* Information sur le niveau d'émission de substances volatiles dans l'air intérieur, présentant un risque de toxicité par inhalation, sur une échelle de classe allant de A+ (très faibles émissions) à C (fortes émissions)



DESCRIPTION / BESCHREIBUNG / BESCHRIJVING / DESCRIPION / DESCRIPCION / DESCRIZIONE / BESKRIVNING / BESKRIVELSE	SAGA ²		SAGA ² Connect	
Total Thickness / Gesamtdicke / Totale dikte / Épaisseur totale / Espesor total / Espessura total / Spessore totale / Total tjocklek / Total tykkelse	EN ISO 24346	mm	4.60	5.00
Thickness of the wearlayer / Dicke der Nuttschicht / Dikte van de slijtlaag / Épaisseur couche d'usure / Espesor capa de uso / Espessura camada de desgaste / Spessore strato di usura / Sliitskiikt tjocklek / Tykkelse sliitesjikt	EN ISO 24340	mm	0.70	0.70
Weight / Flächengewicht / Gewicht / Poids / Peso / Peso / Vikt / Vekt	EN ISO 23997	g/m ²	5595	8235
Size / Format / Afmetingen / Format / Dimensiones / Dimensões / Dimensioe / Storlek / Størrelse	ISO 24342	mm	500 x 500	701.3 x 701.3
Number of tiles per package / Nombre de dalles par boîte / Cantidad de losetas / Caja	ASTM F 536	inch	19.685" x 19.685"	27.6" x 27.6"
	-	-	10	100
CLASSIFICATION / KLASSIFIKATION / CLASSIFICATIE / CLASSIFICACION / CLASIFICACIONES / CLASSIFICAÇÕES / CLASSIFICAZIONI / KLASSIFICERING / KLASSIFISERING				
Norm/Product Specification / Produktnorm / Technische eigenschappen / Norme/Spécification produit / Normas / Normas / Norma prodotto / Norm/Produktspezifikation / Norm	-	-	EN 652	EN ISO 10582
European Classification / Europäische Klassifizierung / Europese classificatie / Classement européen / Clasificación europea / Classificação Europeia / Europea / Europaklass / Europaklasse	ASTM F 1700-04	-	Class III Type B	Class III Type B
Classement UPEC	EN ISO 10874	Class	34-42	34 - 43
Avis technique	-	n°	12/13-1655	-
Room Impact / Sonorité à la marche / Gehrschall	NFS 31 074	dB	< 65	75
Fire Rating / Brandverhalten / Brand classificatie / Classement Feu / Fuego / Fogo / Reazione al fuoco / Brandklassificering / Brannklassifisering	EN 13 501-1	Class	Bfl-s1	Bfl-s1
Static Electrical Propensity / Begehaufladung / Elektrische eigenschappen / Potentiel de charge / Comportamiento electrostático / Comportamento electrostático / Resistenza elettrica / Elektrisk oppladning / Elektrostatisk oppladning	ASTM E648-08	Class	1	-
Slip Resistance Wet / Rutschhemmung / Anti-slip / Glissance humide / Deslizamiento húmedo / Escorregamento húmido / Scivolosità umida ⁽¹⁾ / Friktion / Friksjon, våt	CAN/ULC S102.2	-	-	-
	EN 1815	kV	< 2	< 2
	DIN 51130/BGR 181	Class	R10 ⁽²⁾	R10
PERFORMANCES / TECHNISCHE EIGENSCHAFTEN / TESTRESULTAAT / PERFORMANCE / CUALIDADES TÉCNICAS / PERFORMANCES / CARATTERISTICHE TECNICHE / TESTVÄRDEN / TESTVERDIER				
Wear Resistance / Verschleißverhalten / Slijtvastheid / Résistance à l'usure / Abrasión / Abrasão / Resistenza all'abrasione / Slitagemotstånd / Sliestykke	EN 660.2	mm ³	≤ 2.0	≤ 2.0
Wear Group / Verschleißgruppe / Groep slijtvastheid / Groupe d'abrasion / Grupo de abrasion / Grupo de abrasão / Gruppo di abrasione / Sliitklass / Sliitjesgruppe	EN 652	group	T	T
Type Binder content / Teneur en agent liant	ISO 10582	group	-	I
Dimensional Stability / Maßstabilität / Maatvastheid / Stabilité dimensionnelle / Estabilidad dimensional / Estabilidade dimensional / Stabilität dimensionale / Dimensjonsstabilitet / Dimensjonsstabilitet	EN ISO 23999	%	≤ 0.15	≤ 0.15
Residual Indentation / Resteindruck / Indrukbelasting / Poinçonnement statique rémanent / Punzonamiento / Punçoamento / Impronta / Inntrykksbestandighet / Inntrykksfasthet	EN ISO 24343-1	mm	< 0.13	≤ 0.10
Castor chair test / Stuhlrollenbeanspruchung / Rolweerstand bureaustoelen / Essai de la chaise à roulettes / Determinación del efecto de una silla con ruedas / Resistência a cadeiras de rodas / Resistenza al passaggio di sed / Tålighet mot rullande stolshjul / Rullende stolhjul (Type W)	ISO 4918	-	OK	OK
Impact sound insulation / Trittschallverbesserungsmaß / Geluidsisolatie / Isolation acoustique bruits de chocs / Acústica / Isolamento acústico / Stegljudsdämpning / Trinnylidsdemping	EN ISO 717-2	dB	15	5
Impact insulation class (IIC)	ASTM E492	dB	IIC - 58dB	-
Thermal Conductivity / Wärmeleitfähigkeit / Thermische weerstand / Conductivité thermique / Conductividad térmica / Contutividade térmica / Resistenza termica / Värmeledningsmotstånd / Varmemotstånd	EN ISO 10456	W/(m.K)	0.25	0.25
Colour Fastness / Lichtechtheit / Lichtechtheit / Solidité lumière / Resistencia a la luz / Estabilidade das cores / Solidità alla luce / Färgbeständighet / Fargebestandighet	EN 20 105 - B02	degree	≥ 6	≥ 6
Surface Treatment / Oberflächenvergütung / Oppervlaktebehandling / Traitement de surface / Tratamiento de superficie / Tratamento de superficie / Trattamento di superficie / Ytbehandling / Overflatebehandling	-	-	Protocolsol®	Protocolsol®
Chemical Products Resistance / Verhalten gegenüber Chemikalien / Chemische bestandigheid / Résistance aux produits chimiques / Resistencia a los productos químicos / Resistência aos produtos químicos / Resistenza ai prodotti chimici / Kemikaliebestandighet / Kjemikaliebestandighet	EN ISO 26987	-	OK / Beständig gegenüber nicht färbenden alkoholhaltigen Handdesinfektionsmitteln, Haushaltschemikalien und verdünnten Säuren und Laugen bei kurzzeitiger Einwirkung	OK
ENVIRONMENT/INDOOR AIR QUALITY / UMWELT/RAUMLUFTQUALITÄT / ENVIRONNEMENT/QUALITE DE L'AIR INTERIEUR / MEDIO AMBIENTE/CALIDAD INTERIOR DEL AIRE INTERIOR / MEIO AMBIENTE/ QUALIDADE DO AR INTERIOR / INNOMHUSLUFT / EMISJONER				
TVOC after 28 days / TVOC (28 Tage) / TVOC (28 dagen) / TVOC après 28 jours / TVOC (28 dias) / TVOC (28 dias) / TVOC (28 giorni) / TVOC (28 dagar) / TVOC (28 dager)	ISO 16000-6	µg/m ³	< 10	< 10
Certification / Zertifikat / Certification / Certificado / Certificação / Certifikat / Sertifisering	-	-	Floorscore®	-
CE MARKING / CE KENNZEICHNUNG / EG_CONFORMITEITSMERK / MARQUAGE CE / MARCA DE CONFORMIDAD CE / MARCA DE CONFORMIDADE CE / MARCATURA CE DI CONFORMITA / CE-MÄRKNING / CE MARKING				
CE	EN 14041	-		

(1) Ramp test with oil / Schiefe Ebene / Plan incliné avec huile

(2) Glissance humide / Slip resistance wer / Rutschhemmung : details sur site gerflor.com / details on website gerflor.com / Einzelheiten auf der web-site gerflor.com

SAGA²: LESS SPEAKING FOR MORE ACTIONS

<p>COMPOSITION 100% REACH Cork Backing (SAGA² only)</p>	<p>INDOOR AIR QUALITY 10 times better than norms requirements (TVOC < 100 µg/m³ after 28 days) No formaldehyde emission</p>	<p>RECYCLED CONTENT 55%</p>	<p>RECYCLABILITY 100%</p>	<p>LIFE CYCLE ANALYSIS Eco-designed according to a product specific Life Cycle Analysis</p>	<p>WELNESS SAGA² only Comfort : Walking comfort <65dB (best certification) Impact noise reduction -15 dB</p>
---	--	--	--------------------------------------	--	---

IMPORTANT: The information contained in this document is valid from 01/06/2019 and is subject to change at any time without notice. In the context of constantly changing technology, our customers are responsible, prior to any use, for checking with us that this document is the version in force.

IMPORTANT : Les informations contenues dans ce document sont valables à compter du : 01/06/2019 et susceptibles d'être modifiées à tout moment et sans préavis. L'évolution de la technique étant permanente, il appartient à notre clientèle avant toute mise en œuvre, de vérifier auprès de nos services que le présent document est bien celui en vigueur.

FRANCE: Gerflor Service Express

N°Azur 0 810 569 569 N°Azur FAX 0 810 569 570

e-mail: contactfrance@gerflor.com

OTHER COUNTRIES: Gerflor International

Tel: +33 (0)4 74 05 40 00 - Fax: +33 (0)4 74 05 03 13

e-mail: gerflorcontract@gerflor.com

Gerflor
theflooringgroup